

Furnipart Handles

wilson
&bradley
The Perfect Fit



furnipart

Wilson & Bradley: The Perfect Fit



For nearly 50 years, Wilson & Bradley has been a trusted name in the kitchen and cabinetry hardware industry across Australia.

Founded in 1976 as a family-owned business, we have grown into one of the country's leading hardware distributors, supplying products from international brands such as Blum, Wescos, SIGE, L&S Lighting and Furnipart, bringing global quality and design expertise to the Australian market.

Our success is built on strong family values and a deep understanding of our customers' needs. We continuously strive to enhance the customer experience by introducing new products, improving our services, and providing the expertise, inspiration, and solutions that help create more functional and memorable spaces.

Our brand promise, The Perfect Fit, reflects our commitment to delivering high-quality hardware solutions that integrate seamlessly into every project. Whether you're a cabinetmaker, designer, architect, or end user, we're dedicated to providing products and services that meet your needs with precision and reliability.



Wilson & Bradley staff out front of the Melbourne warehouse and showroom - 1996



To support The Perfect Fit, we've established four key pillars that guide everything we do:



Into Every Space:

We provide high-quality hardware and solutions that bring great design and functionality to every space.



Supporting Our Customers at Every Step:

We offer expert advice and personalised support at every stage, from factory to showroom, to ensure long-term customer success.



The Best Result is Trust:

Our partnerships are built on trust, delivering quality products and dependable service for peace of mind on every project.



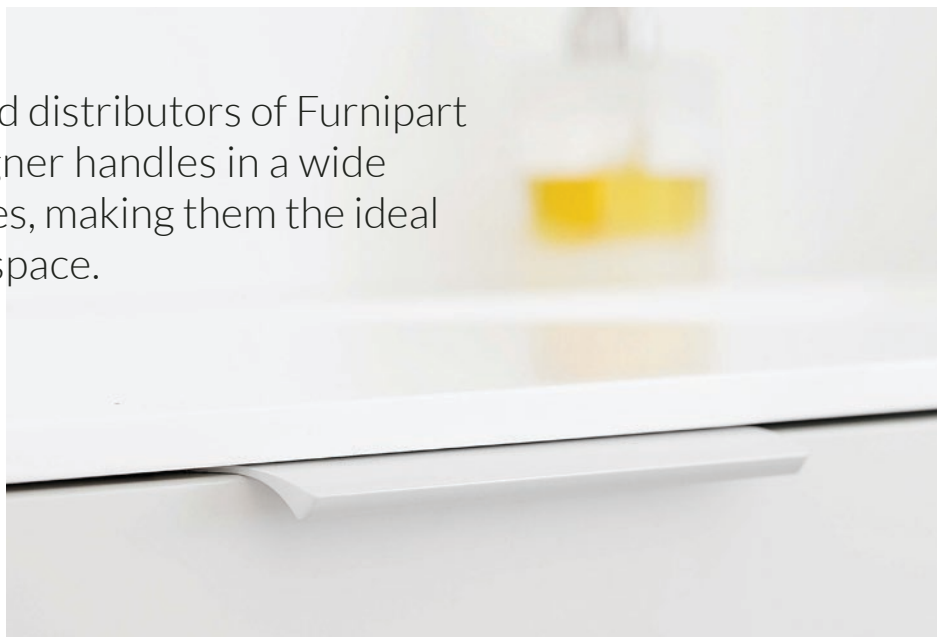
Advancing Technology and Sustainable Practices:

We embrace innovation and sustainable practices to enhance performance while reducing environmental impact for a better future.

Guided by these pillars, we continue to evolve with the industry, ensuring that our customers can rely on us for premium hardware, expert support, and forward-thinking solutions that make every project a success.

Whether you're looking for innovative products, practical solutions, or a reliable partner for your business, Wilson & Bradley delivers The Perfect Fit - for every space, every project, and every customer.

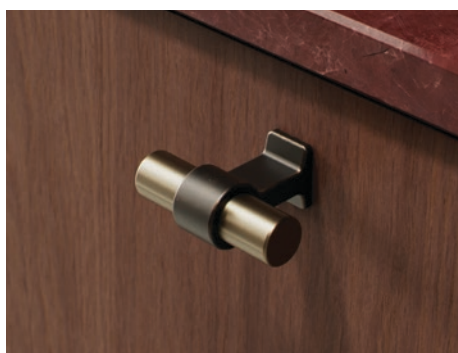
Wilson & Bradley are proud distributors of Furnipart - supplying premium designer handles in a wide variety of styles and finishes, making them the ideal choice for enhancing any space.



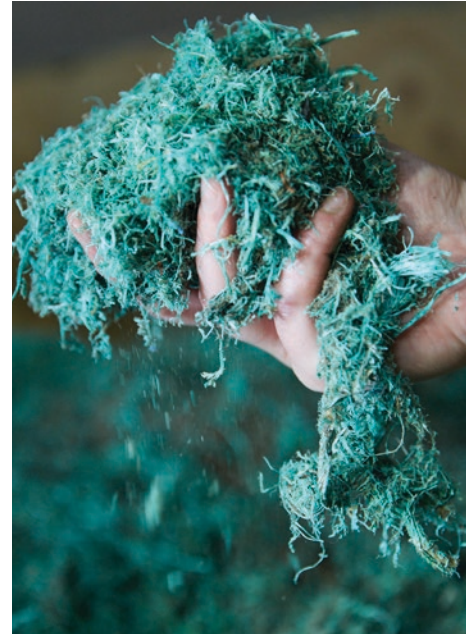
What began as a modest home office in 1977 has transformed into a market leader in the global design industry. Founded in Denmark by Lars Ole Hansen, Furnipart's journey is a story of bold ambition, innovation, and a firm commitment to quality. From their early days, Furnipart has been driven by one simple mission: to design handles that transform everyday spaces into beautiful and distinctive environments.

Today, Furnipart is an international design company that combines uncompromising craftsmanship with innovative and timeless handles. Collaborating with both Danish and international designers, this international outlook ensures that their designs are not only of the highest quality but also reflect a diverse range of influences and styles. Each partnership is carefully chosen to ensure a perfect match with their values and aesthetics.

With products distributed in more than 50 countries, Furnipart's influence extends far beyond Denmark. Their handles are featured in kitchens, bathrooms, offices, and commercial spaces worldwide, each one crafted with care and precision. This growing global presence reflects the trust and recognition earned from decades of delivering excellence.



True impact happens when design, quality and responsibility go hand in hand



Commitment to sustainability

Furnipart believes the most responsible choice begins with products built to last and handles that stand the test of time. However, they also acknowledge that manufacturing uses resources and leaves a mark on the planet.

Because of this they are committed to making smarter and more responsible choices - exploring better materials, optimising production processes, and designing for longevity.

Designing responsibility:

Furnipart's focus is on reducing emissions, enabling circular use of materials and ensuring fair conditions across the value chain. It's not about quick fixes - it's about creating lasting impact, product by product.

OceanIX:

Made from at least 90% recycled plastic - the OceanIX range transforms

discarded ocean waste (fishing nets, ropes etc.) into elegant handles and knobs. Giving new life to materials that would otherwise pollute our oceans.



FSC® certified:

Furnipart carefully select their timber materials from FSC certified suppliers, ensuring that the forestry practices used are responsible and considerate of both environmental and social impact.



Cradle to Cradle certified:

Several of Furniparts products are Cradle to Cradle certified, emphasising material health, recyclability and social responsibility.

With innovation and responsibility at the core, Furnipart are expanding their use of more sustainable materials, refining processes and upholding the highest industry standards.

Furnipart believes that true impact happens when design, quality and responsibility go hand in hand.

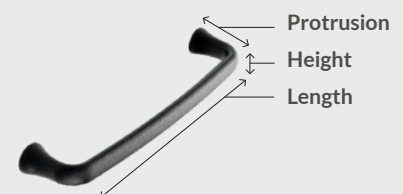
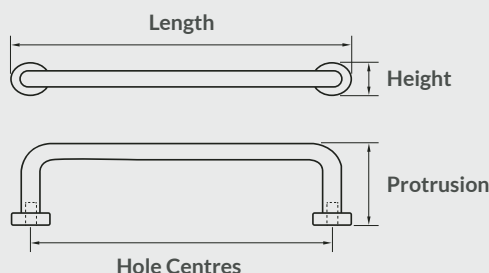
They are on a mission to set new standards in the industry, ensuring transparency and measurable progress in sustainability from design all the way to production.

View online

Scan to shop the full Furnipart range online

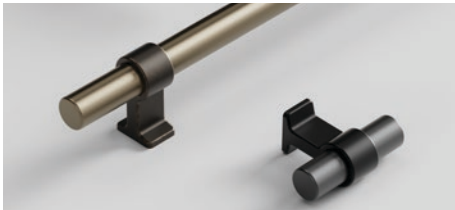


Size Guide



Contents

SPECIALTY/FEATURE



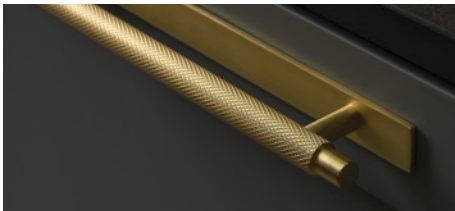
10. Bond



14. Horizon



16. Villa



19. Manor



22. Long Handles

SUSTAINABLE - OCEANIX



30. Plato



31. Square 10

CAST IRON



34. Art



34. Fleur



35. Ink



35. Motion



36. Pagoda



36. Pen



37. Provence

PULL CABINET HANDLES



40. Artisan



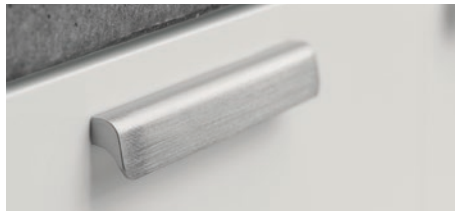
42. Bench



44. Edge Straight



50. Elan

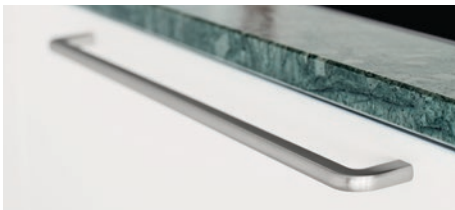


53. Fall



55. Station

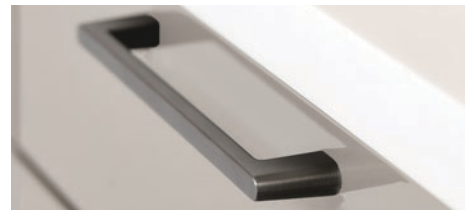
SQUARE CABINET HANDLES



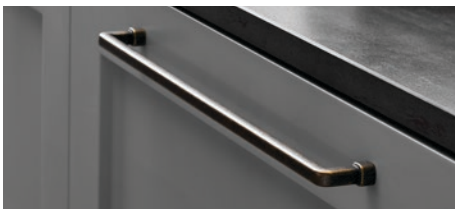
60. Compact



61. Chateau



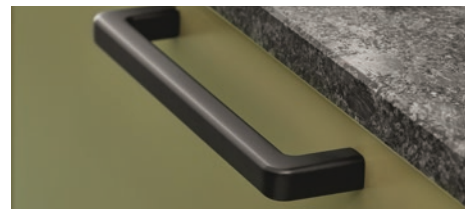
63. Diner



64. Equester



65. Fold



66. Mango



67. Regular 2



68. Slim



69. Square



70. Tocco



72. U Turn



73. Vista

TRADITIONAL CABINET HANDLES



76. Classic



78. Equester

KNOBS



82. Autumn



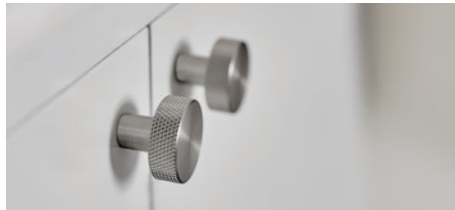
83. Bell



84. Circle



85. Plato



86. Simon

TIMBER



90. Beret



90. Circle



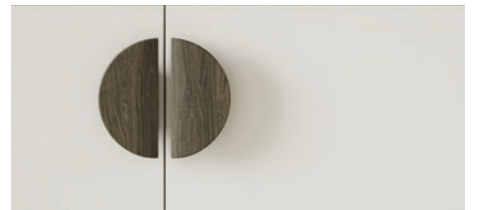
91. Crossing



92. Elan



93. Glove



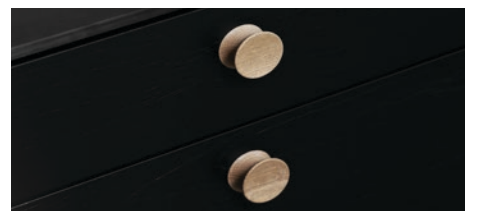
94. Horizon



95. Join



96. Manta



97. Pulley



NEW



Bond

Introducing Bond by furnipart - a minimalist design that adds a touch of elegance to any space. Crafted with care and attention to detail, these handles and knobs are both functional

and beautiful. With zamac feet, an aluminum handle and available in multiple finishes, 'Bond' combines aesthetics with functionality in an unparalleled way.



Bond T-Knob

Material: Aluminium
Protrusion: 38.5mm
Height: 20mm

Finish	Length	Code
● Antique Brown/Fine Brushed Brass	50mm	BON50BB
● Matt Black/Gun Metal	50mm	BON50GUN



Bond Handle

Material: Aluminium, Zamac
Protrusion: 38.5mm
Height: 20mm

Finish	Length	Hole Centres	Code
● Antique Brown/Fine Brushed Brass	250mm	160mm	BON160BB
● Matt Black/Gun Metal	250mm	160mm	BON160GUN
● Antique Brown/Fine Brushed Brass	410mm	320mm	BON320BB
● Matt Black/Gun Metal	410mm	320mm	BON320GUN





Horizon

Horizon appears to float above the panel surface. It has a half moon shape and an elegant transition from flat to curved on the front face.

Suited to any orientation, mounting two handles across adjacent panels forms a complete circle.



Horizon - 80mm

Protrusion: 27mm
Height: 41mm
Length: 80mm
Hole Centres: 32mm

Finish	Material	Code
● Brushed Brass	Zamac	HOR80BB
○ Matt White	Zamac	HOR80MW
● Matt Black	Zamac	HOR80MB
● Dark Brown Oak	Wood FSC 100%	HOR80DBO
● Oak Clear Lacquered	Wood FSC 100%	HOR80OAK

Horizon - 140mm

Protrusion: 28mm
Height: 70mm
Length: 140mm
Hole Centres: 64mm

Finish	Material	Code
● Brushed Brass	Zamac	HOR140BB
○ Matt White	Zamac	HOR140MW
● Matt Black	Zamac	HOR140MB
● Dark Brown Oak	Wood FSC 100%	HOR140DBO
● Oak Clear Lacquered	Wood FSC 100%	HOR140OAK



Villa

Villa by furnipart is a handle inspired by the classical architecture of Greece. With its refined design, Villa is the perfect detail to elevate the decor in any room.

Available in handle, knob and T-knob versions, as well as a variety of finishes to help add a touch of classic beauty.



Villa Handle

Material: Zamac
Protrusion: 34mm
Height: 20mm

Finish	Length	Hole Centres	Code
● Antique Brown	178mm	128mm	VIL128ABR
● Bright Nickel	178mm	128mm	VIL128BRN
● Gun Metal	178mm	128mm	VIL128GUN
● Antique Brown	242mm	192mm	VIL192ABR
● Bright Nickel	242mm	192mm	VIL192BRN
● Gun Metal	242mm	192mm	VIL192GUN



Villa Round Knob

Material: Zamac
Protrusion: 30mm
Diameter: 30mm

Finish

- Antique Brown
- Bright Nickel
- Gun Metal

Code

VIL30ABR
VIL30BRN
VIL30GUN



Villa T-Knob

Material: Zamac
Length: 50mm
Protrusion: 34mm
Height: 20mm

Finish

- Antique Brown
- Bright Nickel
- Gun Metal

Code

VIL34ABR
VIL34BRN
VIL34GUN



Manor

The diamond pattern on the Furnipart Manor collection sets the tone in a narrative founded firmly on warmth and exclusiveness.

Each handle and knob in this range features the distinctive diamond patterned surface which in addition to assuring an exceptionally good handle, presents an exclusive expression that is further highlighted by the attention to detail on both knobs and handles.

The Manor collection is available in three finishes: Black, Antique Brass and Gold with each colour bringing something different to the interior design, but a trait they both share is the truly elegant expression they convey.

Use Manor to add a dash of warmth to an industrial kitchen, to highlight the deep elegance of a rural kitchen, or to achieve another effect entirely.



Manor Round Knob

Material: Zamac
Protrusion: 35mm
Diameter: 30mm

Finish	Code
● Antique Brass	MNR30ANB
● Gold	MNR30GLD
● Inox Look	MNR30SS
● Matt Black	MNR30MB



Manor T-Knob

Material: Zamac
Length: 54mm
Protrusion: 39mm
Height: 30mm

Finish	Code
● Antique Brass	MNR54ANB
● Gold	MNR54GLD
● Inox Look	MNR54SS
● Matt Black	MNR54MB



Manor Handle

Material: Zamac
Protrusion: 39mm
Height: 20mm

Finish	Length w/ backplate	Length w/o backplate	Hole Centres	Code
● Antique Brass	190mm	282mm	128mm	MNR128ANB
● Gold	190mm	282mm	128mm	MNR128GLD
○ Inox Look	190mm	282mm	128mm	MNR128SS
● Matt Black	190mm	282mm	128mm	MNR128MB
● Antique Brass	254mm	246mm	192mm	MNR192ANB
● Gold	254mm	246mm	192mm	MNR192GLD
○ Inox Look	254mm	246mm	192mm	MNR192SS
● Matt Black	254mm	246mm	192mm	MNR192MB

Note: Can be installed with or without backplate

NEW



Manor Long Handles

Joining our existing best selling Manor range is the new Manor long handle option, perfect for tall cabinets and closet doors.

The signature diamond pattern of the Manor sets the tone for a story defined by exclusivity, warmth, and refined detail.



Manor

Material: Zamac
Protrusion: 36mm
Height: 14mm
Length: 694mm
Hole Centres: 640mm

Finish

- Antique Brass
- Gold
- Inox Look
- Matt Black

Code

Antique Brass	MNR640ANB
Gold	MNR640GLD
Inox Look	MNR640SS
Matt Black	MNR640MB



Edge Straight Long Handles

Our collection of long handles accommodates the need of handles for tall cabinets and closet doors. Emphasising the vertical lines of tall fronts, our long handles are a graphic design statement with clear functionality.

These handles are not meant to be hidden though they can be discrete. Currently available in 600mm and 1200mm lengths and in four different finishes.



Edge Straight - 600mm

Material: Aluminium
Protrusion: 41mm
Height: 18mm
Length: 600mm
Hole Centres: 3 x 160mm

Finish	Code
● Brushed Brass	EDG600BB
● Brushed Matt Black	EDG600BMB
● Inox Look	EDG600SS
● Matt White	EDG600MW



Edge Straight - 1200mm

Material: Aluminium
Protrusion: 41mm
Height: 18mm
Length: 1200mm
Hole Centres: 7 x 160mm

Finish	Code
● Brushed Brass	EDG12BB
● Brushed Matt Black	EDG12BMB
● Inox Look	EDG12SS
● Matt White	EDG12MW



Elan Long Handles

Elan is a characteristic elegant handle with a fine closed outline. A delicate balance between functionality and a complete stylish expression, where the design is defined by the details in

the soft rounded edges – precisely executed with a beautiful finish.



Elan - 600mm

Protrusion: 20mm
Length: 600mm
Hole Centres: 160 & 544mm

Finish	Material	Height	Code
● Inox Look	Aluminium	18mm	ELA600SS
● Brushed Brass	Aluminium	18mm	ELA600BB
● Brushed Matt Black	Aluminium	18mm	ELA600BMB
● Dark Brown Oak	Wood FSC 100%	22mm	ELA600DBO
● Oak Clear Lacquered	Wood FSC 100%	22mm	ELA600OAK

Elan - 1200mm

Protrusion: 20mm
Length: 1200mm
Hole Centres: 160 & 544 & 1088mm

Finish	Material	Height	Code
● Inox Look	Aluminium	18mm	ELA12SS
● Brushed Brass	Aluminium	18mm	ELA12BB
● Brushed Matt Black	Aluminium	18mm	ELA12BMB
● Dark Brown Oak	Wood FSC 100%	22mm	ELA12DBO
● Oak Clear Lacquered	Wood FSC 100%	22mm	ELA12OAK

NEW



From ocean plastic to Furniture handles

OceanIX

Designed and manufactured in Denmark in collaboration with PLASTIX, OceanIX transforms discarded ocean waste including used fishing nets and ropes into elegant handles and knobs made from at least 90% recycled plastic.

Giving new life to materials that would otherwise pollute our oceans.

OceanIX combines timeless design with a low environmental impact, showing how innovation and responsibility can

come together in products that are both beautiful and better for the planet.

Available now as part of the OceanIX range are the Plato and Square 10 collections.

This is just the beginning...
- a journey towards sustainable handles



PLATO - Dyed Black

OceanIX isn't just about recycling plastic – it's about rethinking the entire process behind the products we surround ourselves with.



Plato (OceanIX)

Material: OceanIX
Protrusion: 24mm
Diameter: 42mm

Finish
 Beige
 Dyed Black
 Grey

Code
PLA42BG
PLA42DB
PLA42GR

Plato's tight shape and clear colours are the essence of Danish design, communicated wordlessly by the conical neck and rear, and the small radius.



Square 10 (OceanIX)

Material: OceanIX
Protrusion: 32mm
Height: 10mm
Length: 138mm
Hole Centres: 128mm

Finish

- Beige
- Dyed Black
- Grey

Code

SQR128BG
 SQR128DB
 SQR128GR

Furnipart's Square 10 handles offer simplicity and countless options for adding a personal touch through the choice of colour. It is a go-to design suitable for all kinds of interiors.



Cast Iron

Art	34
Fleur	34
Ink	35
Motion	35
Pagoda	36
Pen	36
Provence	37



Furnipart's Cast Iron handle collection provides a special experience through sight and touch. The surface of each cast iron handle has a completely unique texture, giving the design a new dimension.



Art

Material: Cast Iron
Protrusion: 28mm
Length: 117mm
Hole Centres: 96mm

Finish
● Black

Code
ART96CIB

This handle draws its inspiration from die-casting processes. It has a traditional shape which adds elegance to a rustic look.



Fleur

Material: Cast Iron
Protrusion: 30mm
Diameter: 46mm

Finish
● Black

Code
FLR46CIB

This design draws its inspiration from old-fashioned cooker rings. It results in a completely rustic look, which is perfect in a romantic country kitchen.



Ink

Material: Cast Iron
Protrusion: 30mm
Height: 32mm
Length: 64mm
Hole Centres: 32mm

Finish
● Black

Code
INK64CIB

This design draws inspiration from the shapes of the American abstract artist Paul Kremer. The front has a convex shape which invites the finger to rest and touch. Cast iron adds texture to the design making it both solid and inviting.



Motion

Material: Cast Iron
Protrusion: 35mm
Height: 22mm
Length: 182mm
Hole Centres: 160mm

Finish
● Black

Code
MOT160CIB

Drawing inspiration from the strength and character of cast iron cookware. The distinctive detailing lies in the foot of the handle, where form and function come together to create a striking decorative element.



Pagoda

Material: Cast Iron
Protrusion: 38mm
Height: 13mm
Length: 173mm
Hole Centres: 160mm

Finish

● Black

Code

PAG160CIB

Pagoda is shaped by the nature of the material itself - Cast iron opens up unique creative possibilities, allowing for forms that feel both robust and refined. This handle draws inspiration from traditional tools, machinery and timeless craftsmanship.



Pen

Material: Cast Iron
Protrusion: 32mm
Height: 11mm
Length: 183mm
Hole Centres: 128mm

Finish

● Black

Code

PEN128CIB

Pen is inspired by the trivet of a gas cooker and has a distinctive Japanese expression in its light and simplistic outline. Its low-key nature makes it suitable for kitchens and on furniture alike.



Provence

Material: Cast Iron
Protrusion: 38mm
Height: 13mm
Length: 179mm
Hole Centres: 160mm

Finish
● Black

Code
PRV160CIB

Taking inspiration from classic door handles of a historic building, this design highlights the seamless transition from the oval handle to the round foot, where form flows effortlessly into base, creating a handle that feels both refined and harmonious in the hand.



Pull Handles

Artisan	40
Bench	42
Edge Straight	44
Elan	50
Fall	53
Station	55





Artisan

Artisan is a handle with a refined design idiom. It presents simple, almost jewellery-like processing that produces an ultra-slim and delicate expression.

The distinguishing features of the handle are its soft lines that mirror the lines on the piece of furniture it graces, generating a sense of calm.



Artisan - 40mm

Material: Aluminium
Protrusion: 41mm
Height: 12mm
Length: 40mm
Hole Centres: 20mm

Finish

- Inox Look
- Brushed Brass
- Brushed Matt Black

Code

ATN40SS
 ATN40BB
 ATN40BMB



Artisan - 200mm

Material: Aluminium
Protrusion: 41mm
Height: 12mm
Length: 200mm
Hole Centres: 160mm

Finish

- Inox Look
- Brushed Brass
- Brushed Matt Black

Code

ATN200SS
 ATN200BB
 ATN200BMB



Bench

Inspiration for the Bench came from a desire to create a modern handle, in a bold architectural style with an emphasis on comfort and practicality. The standard version can be anodised in a range of colours and the leather option provides a different appearance and tactile feel.

The intention is for the range to be extended with future design variations. The anodised version is great for kitchen, bathroom or any kind of furniture. The leather version is also great for bedroom and living room furniture.



Bench - 40mm

Material: Aluminium
Protrusion: 48mm
Height: 19mm
Length: 40mm
Hole Centres: 20mm

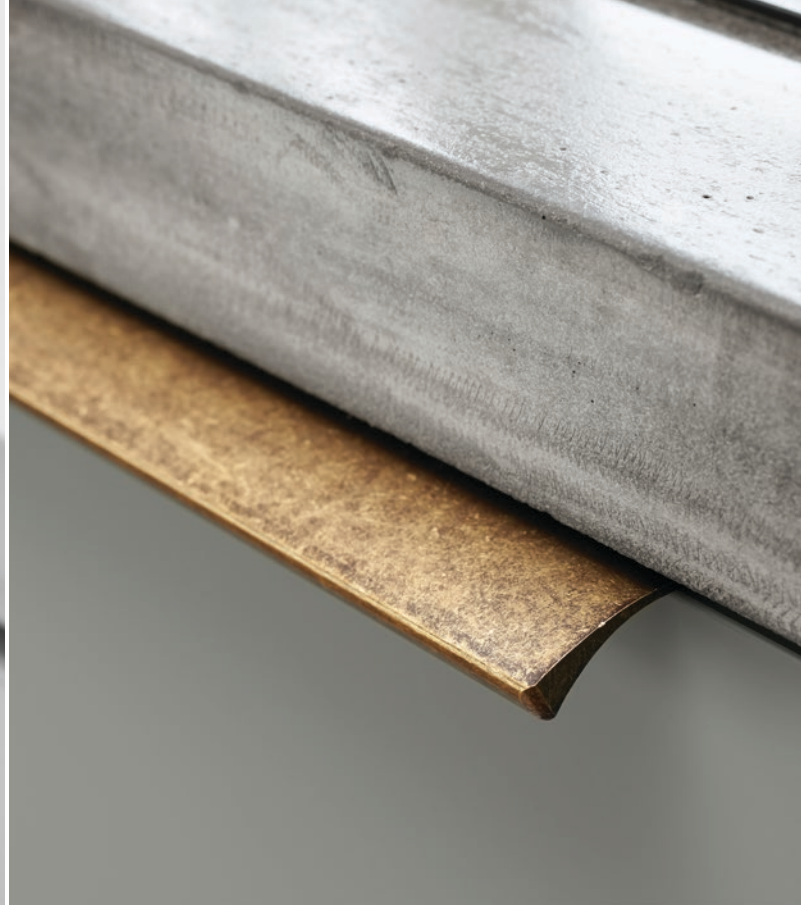
Finish	Code
● Black Leather/Brushed Matt Black	BEN40BLMB
● Brushed Brass	BEN40BB
● Inox Look	BEN40SS
● Matt Black	BEN40MB



Bench - 200mm

Material: Aluminium
Protrusion: 48mm
Height: 19mm
Length: 200mm
Hole Centres: 160mm

Finish	Code
● Brushed Brass	BEN200BB
● Inox Look	BEN200SS
● Matt Black	BEN200MB



Edge Straight

Inspiration for the Furnipart Edge Straight handle came from the desire to create the ultimate edge mounted profile handle. Edge Straight has a timeless elegance and an excellent grip.

It's simple and modern design can either be subtle, or have a large effect on the overall aesthetic of the space through use of contrasting colour.



Edge Straight - 40mm

Material: Aluminium
Protrusion: 41mm
Height: 18mm
Length: 40mm
Hole Centres: 2 x 20mm

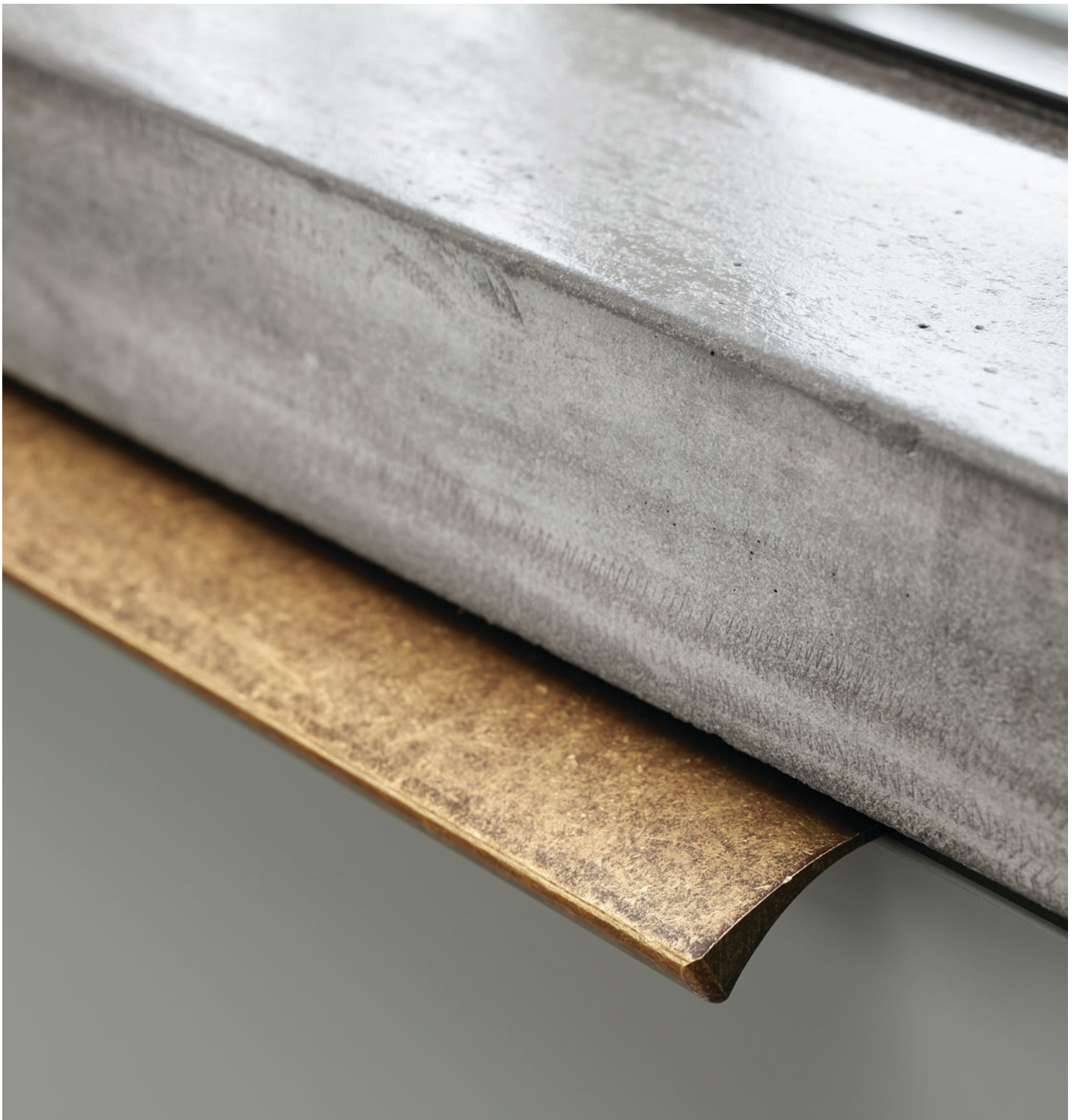
Finish	Code
● Antique Brass	EDGK40ANB
● Antique Bronze	EDGK40AB
○ Bright Anodised	EDGK40BA
○ Bright Chrome	EDGK40BRC
● Brushed Anthracite	EDGK40BAN
○ Brushed Brass	EDGK40BB
● Brushed Matt Black	EDGK40BMB
● Brushed Rose Gold	EDGK40BRG
○ Brushed Gold	EDGK40GLD
○ Inox Look	EDGK40SS
○ Matt White	EDGK40MW
○ White	EDGK40WH



Edge Straight - 100mm

Material: Aluminium
Protrusion: 41mm
Height: 18mm
Length: 100mm
Hole Centres: 60mm

Finish	Code
● Brushed Anthracite	EDG100BAN
○ Brushed Brass	EDG100BB
○ Brushed Gold	EDG100GLD
● Brushed Matt Black	EDG100BMB
○ Inox Look	EDG100SS
○ Matt White	EDG100MW
○ White	EDG100WH



Edge Straight - 200mm

Material: Aluminium
Protrusion: 41mm
Height: 18mm
Length: 200mm
Hole Centres: 3 x 80mm

Finish	Code
● Antique Brass	EDG200ANB
● Antique Bronze	EDG200AB
○ Bright Anodised	EDG200BA
○ Bright Chrome	EDG200BRC
● Brushed Anthracite	EDG200BAN
○ Brushed Brass	EDG200BB
○ Brushed Gold	EDG200GLD
○ Brushed Rose Gold	EDG200BRG
○ Inox Look	EDG200SS
○ Matt White	EDG200MW
○ White	EDG200WH



Edge Straight - 350mm

Material: Aluminium
Protrusion: 41mm
Height: 18mm
Length: 350mm
Hole Centres: 3 x 160mm

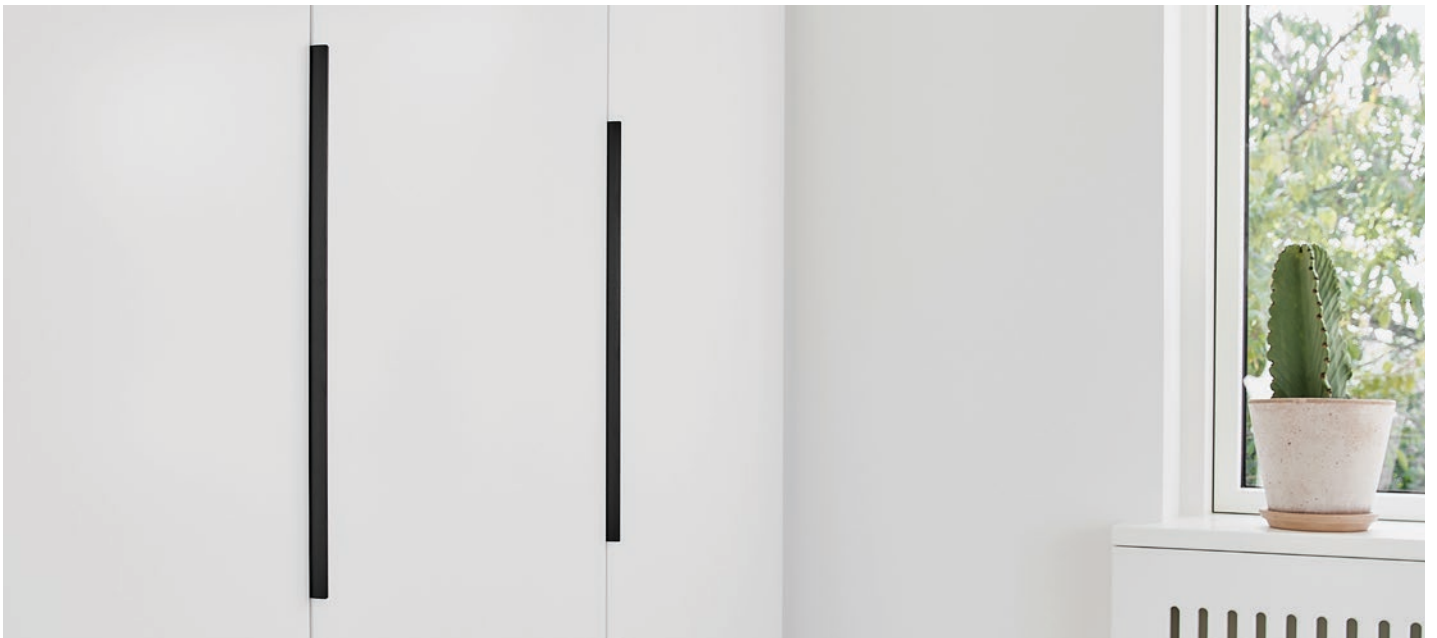
Finish	Code
● Antique Brass	EDG350ANB
● Antique Bronze	EDG350AB
● Bright Anodised	EDG350BA
● Bright Chrome	EDG350BRC
● Brushed Anthracite	EDG350BAN
● Brushed Brass	EDG350BB
● Brushed Gold	EDG350GLD
● Brushed Rose Gold	EDG350BRG
● Brushed Matt Black	EDG350BMB
● Inox Look	EDG350SS
● Matt White	EDG350MW
● White	EDG350WH



Edge Straight Long Handles

Our collection of long handles accommodates the need of handles for tall cabinets and closet doors. Emphasising the vertical lines of tall fronts, our long handles are a graphic design statement with clear functionality.

These handles are not meant to be hidden though they can be discrete. Currently available in 600mm and 1200mm lengths and in four different finishes.



Edge Straight - 600mm

Material: Aluminium
Protrusion: 41mm
Height: 18mm
Length: 600mm
Hole Centres: 3 x 160mm

Finish	Code
● Brushed Brass	EDG600BB
● Brushed Matt Black	EDG600BMB
○ Inox Look	EDG600SS
○ Matt White	EDG600MW



Edge Straight - 1200mm

Material: Aluminium
Protrusion: 41mm
Height: 18mm
Length: 1200mm
Hole Centres: 7 x 160mm

Finish	Code
● Brushed Brass	EDG12BB
● Brushed Matt Black	EDG12BMB
○ Inox Look	EDG12SS
○ Matt White	EDG12MW



Elan

Elan shows a fine balance between functionality and a complete, stylish expression, where the whole is defined by the details, the soft rounded corners – precisely crafted with a fine finish.



Elan - 50mm

Protrusion: 20mm
Length: 50mm
Hole Centres: 32mm

Finish	Material	Height	Code
● Inox Look	Aluminium	18mm	ELA50SS
● Brushed Brass	Aluminium	18mm	ELA50BB
● Brushed Matt Black	Aluminium	18mm	ELA50BMB
● Dark Brown Oak	Wood FSC 100%	22mm	ELA50DBO
● Oak Clear Lacquered	Wood FSC 100%	22mm	ELA50OAK



Elan - 200mm

Protrusion: 20mm
Length: 200mm
Hole Centres: 160mm

Finish	Material	Height	Code
● Inox Look	Aluminium	18mm	ELA200SS
● Brushed Brass	Aluminium	18mm	ELA200BB
● Brushed Matt Black	Aluminium	18mm	ELA200BMB
● Dark Brown Oak	Wood FSC 100%	22mm	ELA200DBO
● Oak Clear Lacquered	Wood FSC 100%	22mm	ELA200OAK

Elan Long Handles



Elan - 600mm

Protrusion: 20mm
Length: 600mm
Hole Centres: 160 & 544mm

Finish	Material	Height	Code
● Inox Look	Aluminium	18mm	ELA600SS
● Brushed Brass	Aluminium	18mm	ELA600BB
● Brushed Matt Black	Aluminium	18mm	ELA600BMB
● Dark Brown Oak	Wood FSC 100%	22mm	ELA600DBO
● Oak Clear Lacquered	Wood FSC 100%	22mm	ELA600OAK

Elan - 1200mm

Protrusion: 20mm
Length: 1200mm
Hole Centres: 160 & 544 & 1088mm

Finish	Material	Height	Code
● Inox Look	Aluminium	18mm	ELA12SS
● Brushed Brass	Aluminium	18mm	ELA12BB
● Brushed Matt Black	Aluminium	18mm	ELA12BMB
● Dark Brown Oak	Wood FSC 100%	22mm	ELA12DBO
● Oak Clear Lacquered	Wood FSC 100%	22mm	ELA12OAK

Fall

The Fall handle and knob takes inspiration from a traditional handle on a merchant's counter, transformed to a modern handle with an extruded look.

Beautiful lines that flow along the edge and create an attractive form for the hand's clasp of the handle.



Fall - 28mm

Material: Aluminium
Protrusion: 20mm
Height: 30mm
Length: 28mm
Hole Centres: 16mm

Finish
● Matt Black
○ Inox Look

Code
FAL16MB
FAL16SS



Fall - 140mm

Material: Aluminium
Protrusion: 20mm
Height: 30mm
Length: 140mm
Hole Centres: 128mm

Finish
 Matt Black
 Inox Look

Code
 FAL128MB
 FAL128SS

Fall - 236mm

Material: Aluminium
Protrusion: 20mm
Height: 30mm
Length: 236mm
Hole Centres: 224mm

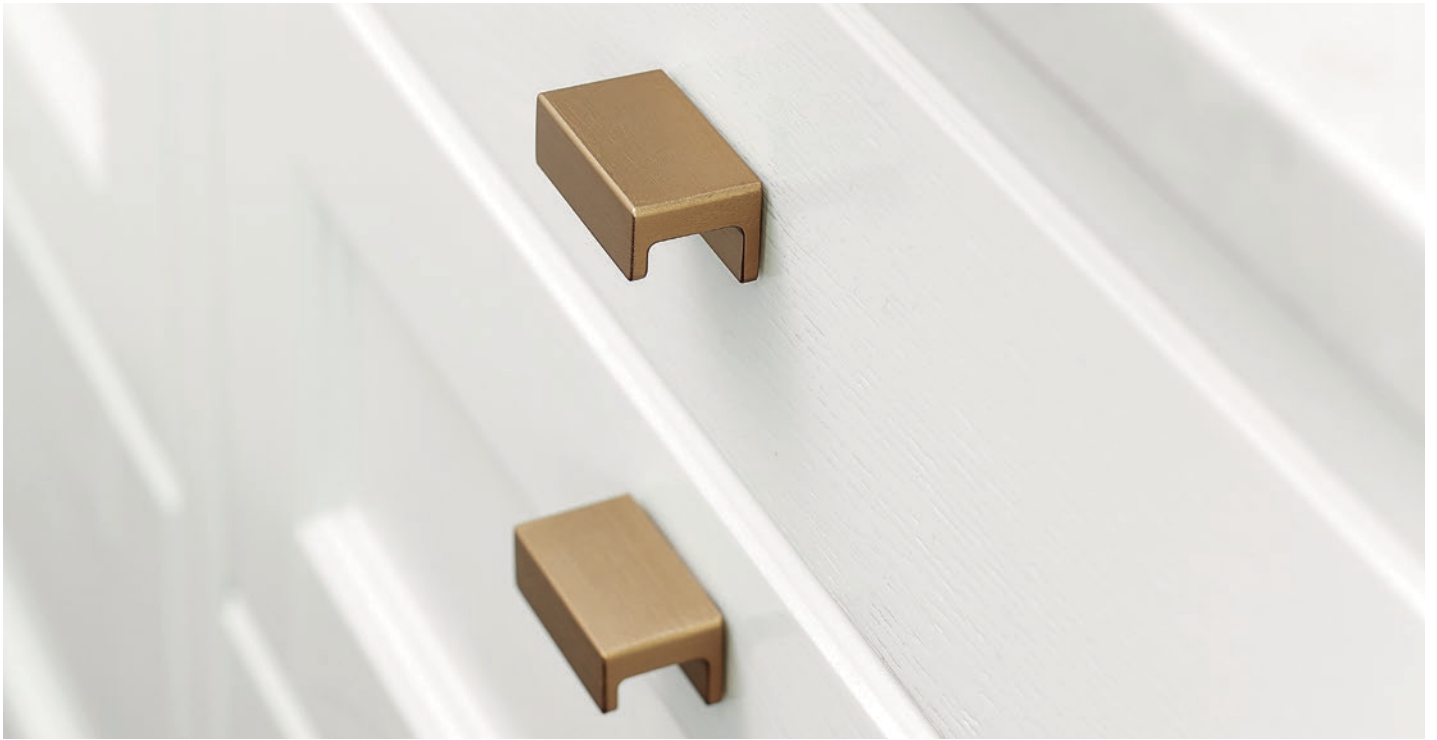
Finish
 Matt Black
 Inox Look

Code
 FAL224MB
 FAL224SS



Station

So simple and elegant. Sometimes a handle practically designs itself. In this case, all form and function come together to create the Station handle.



Station - 32mm

Material: Aluminium
Protrusion: 25mm
Height: 22mm
Length: 44mm
Hole Centres: 32mm

Finish

- Brushed Brass
- Matt Black
- Inox Look

Code

STN32BB
STN32MB
STN32SS



Station - 160mm

Material: Aluminium
Protrusion: 25mm
Height: 22mm
Length: 190mm
Hole Centres: 160mm

Finish

- Brushed Brass
- Matt Black
- Inox Look

Code

STN160BB
STN160MB
STN160SS



Station - 320mm

Material: Aluminium
Protrusion: 25mm
Height: 22mm
Length: 350mm
Hole Centres: 320mm

Finish
● Brushed Brass
● Matt Black
● Inox Look

Code
STN320BB
STN320MB
STN320SS



Square Handles

Compact	60
Chateau	61
Diner	63
Equester	64
Fold	65
Mango	66
Regular 2	67
Slim	68
Square	69
Tocco	70
U-Turn	72
Vista	73





Compact

Material: Zamac
Protrusion: 36mm
Height: 8mm

Finish	Length	Hole Centres	Code
● Inox Look	172mm	160mm	COM160SS
● Black	172mm	160mm	COM160BK
● Inox Look	332mm	320mm	COM320SS
● Black	332mm	320mm	COM320BK

A variation of the traditional pull handle, Compact's rounded front and inner side creates a softness in the room and is gently pleasurable to the touch.



Chateau Handle

Material: Zamac
Protrusion: 30mm
Height: 18mm
Length: 180mm
Hole Centres: 128mm

Finish

- Antique Brown
- Dark Brushed Gold
- Inox Look

Code

CHA128ABR
 CHA128DBG
 CHA128SS

With a love for well thought design and attention to detail and fine craftsmanship, Chateau carries notes of 70's chic and flamboyant touch. With a slightly recessed centre it invites the consumer to interact with the design.



Chateau Knob

Material: Zamac
Protrusion: 30mm
Diameter: 30mm

Finish

- Antique Brown
- Dark Brushed Gold
- Inox Look

Code

CHA30ABR
CHA30DBG
CHA30SS

Chateau is available in both handle and knob payvariation. With a slightly recessed centre, Chateau invites the consumer to interact with the design.



Diner

Material: Zamac
Protrusion: 30mm
Height: 12mm

Finish	Length	Hole Centres	Code
● Brushed Anthracite	180mm	160mm	DIN160BA
○ Inox Look	180mm	160mm	DIN160SS
● Brushed Anthracite	340mm	320mm	DIN320BA
○ Inox Look	340mm	320mm	DIN320SS

Diner is a light and elegant handle that speaks for itself. With its soft, rounded form, it combines simplicity and functionality, offering a design that is understated yet refined.



Equester Cup

Material: Zamac
Protrusion: 26mm
Height: 25mm
Length: 78mm
Hole Centres: 64mm

Finish

- Antique Brass
- Matt Black

Code

EQU64ANB
 EQU64MB



Equester Handle

Material: Zamac
Protrusion: 32mm
Height: 12mm

Finish

- Antique Brass
- Matt Black
- Antique Brass
- Matt Black

Length

172mm
 172mm
 332mm
 332mm

Hole Centres

160mm
 160mm
 320mm
 320mm

Code

EQU160ANB
 EQU160MB
 EQU320ANB
 EQU320MB

The Equester handle has references to the nails used when shoeing horses. The nails have a characteristic head reminiscent of the feet on the handle.



Fold

Material: Zamac
Protrusion: 32mm
Height: 18mm
Length: 170mm
Hole Centres: 160mm

Finish
● Inox Look

Code
FOL160SS

Fold reflects the inherent structure of metal. Inspired by the crystalline grids that form at the atomic level, its faceted design adds both character and strength, while creating a tactile, inviting handle.



Mango

Material: Zamac
Protrusion: 35mm
Height: 12mm

Finish	Length	Hole Centres	Code
● Brushed Brass	172mm	160mm	MAN160BB
○ Inox Look	172mm	160mm	MAN160SS
● Matt Black	172mm	160mm	MAN160MB
○ Inox Look	204mm	192mm	MAN192SS
● Matt Black	204mm	192mm	MAN192MB
○ Inox Look	332mm	320mm	MAN320SS
● Matt Black	332mm	320mm	MAN320MB

Mango is an easy-going and practical handle. It doesn't make too much noise and has a soft yet tight exterior. When you play with the different colours of this design, you can really make it stand out.



Regular 2

Material: Stainless Steel
Protrusion: 40mm
Height: 13mm
Length: 206mm
Hole Centres: 192mm

Finish
● Black

Code
REG2192BK

Regular 2 is an industrial-style practical handle, that takes its inspiration from tools and machine components.



Slim

Material: Zamac
Protrusion: 30mm
Height: 8mm

Finish	Length	Hole Centres	Code
● Inox Look	200mm	160mm	SLM160SS
● Matt Black	200mm	160mm	SLM160MB
● Inox Look	360mm	320mm	SLM320SS
● Matt Black	360mm	320mm	SLM320MB
● Inox Look	488mm	448mm	SLM448SS
● Matt Black	488mm	448mm	SLM448MB

Slim was born from the pursuit of essentials in design. Asking “How much handle is necessary?” led to a form with gently conical ends and carefully balanced proportions, refining this everyday object into an elegant and optimised design.



Square

Protrusion: 32mm
Height: 10mm

Finish	Material	Length	Hole Centres	Code
● Brushed Brass	Aluminium	138mm	128mm	SQR128BB
○ Inox Look	Zamac	138mm	128mm	SQR128SS
● Matt Black	Zamac	138mm	128mm	SQR128MB
○ Inox Look	Zamac	170mm	160mm	SQR160SS
● Matt Black	Zamac	170mm	160mm	SQR160MB
○ Inox Look	Zamac	234mm	224mm	SQR224SS
● Matt Black	Zamac	234mm	224mm	SQR224MB
○ Inox Look	Zamac	330mm	320mm	SQR320SS
● Matt Black	Zamac	330mm	320mm	SQR320MB
○ Inox Look	Zamac	458mm	448mm	SQR448SS
● Matt Black	Zamac	458mm	448mm	SQR448MB
○ Beige	OceanIX	138mm	128mm	SQR128BG
● Dyed Black	OceanIX	138mm	128mm	SQR128DB
○ Grey	OceanIX	138mm	128mm	SQR128GR



Tocco

Material: Zamac
Protrusion: 34mm
Height: 11mm
Length: 192mm
Hole Centres: 160mm

Finish
● Dark Brushed Gold
● Matt Black

Code
TOC160DBG
TOC160MB

Tocco is a light and elegant rail handle which pays attention to the delicate touch between the bar and feet. A simple reduction of the diameter gives character to the design. With its refined curves Tocco offers a subtle and discreet design choice.





U-Turn

Material: Zamac
Protrusion: 38mm
Height: 7mm
Length: 187mm
Hole Centres: 160mm

Finish

- Antique Brown
- Antique Grey
- Inox Look
- Matt Black

Code

UTU160ABR
UTU160AGR
UTU160SS
UTU160MBL

U-Turn's slender oval profile has an asymmetrical foot, so that it gently joins the units or drawer front.



Vista

Material: Zamac
Protrusion: 38mm
Height: 10mm

Finish	Length	Hole Centres	Code
○ Inox Look	112mm	96mm	VIS96SS
○ Inox Look	176mm	160mm	VIS160SS
● Brushed Anthracite	176mm	160mm	VIS160BAN
○ Bright Chrome	176mm	160mm	VIS160BRC
○ Inox Look	208mm	192mm	VIS192SS
○ Bright Chrome	272mm	256mm	VIS256BRC
○ Inox Look	272mm	256mm	VIS256SS
● Brushed Anthracite	336mm	320mm	VIS320BAN
○ Inox Look	336mm	320mm	VIS320SS

Vista draws inspiration from the utensils of the Bronze Age. Beneath its soft exterior lies a precise geometry, giving the handle an inner dynamic. The design is intended to feel smooth and comfortable, reminiscent of a stone polished by the sea, while remaining simple, understated, and organically expressive.



Traditional





Classic

A balanced handle with a curved shape. The Classic is characterised by the feet and the transition to the bar.

Its classic and timeless design makes it ideal for both contemporary and traditional style spaces.



Classic Knob

Material: Zamac
Protrusion: 28mm
Diameter: 34mm

Finish	Code
● Antique Brown	CLA34ABR
● Antique Grey	CLA34AGR
○ Inox Look	CLA34SS



Classic Handle

Material: Zamac
Protrusion: 38mm
Height: 18mm
Length: 186mm
Hole Centres: 160mm

Finish	Code
● Antique Brown	CLA160ABR
● Antique Grey	CLA160AGR
○ Inox Look	CLA160SS



Equester Handle

Material: Zamac
Protrusion: 32mm
Height: 12mm

Finish	Length	Hole Centres	Code
● Antique Brass	172mm	160mm	EQU160ANB
● Matt Black	172mm	160mm	EQU160MB
● Antique Brass	332mm	320mm	EQU320ANB
● Matt Black	332mm	320mm	EQU320MB

The Equester handle has references to the nails used when shoeing horses. The nails have a characteristic head reminiscent of the feet on the handle.



Equester Cup

Material: Zamac
Protrusion: 26mm
Height: 25mm
Length: 78mm
Hole Centres: 64mm

Finish
● Antique Brass
● Matt Black

Code
EQU64ANB
EQU64MB



Knobs

Autumn
Bell
Circle
Plato
Simon

82
83
84
85
86



Plato - Brushed Matt Black



Autumn

Material: Zamac
Protrusion: 27mm
Diameter: 28mm

Finish
● Matt Black
○ Inox Look

Code
AUT36MB
AUT36SS

Autumn draws its inspiration from Danish handicrafts of the 40s and 50s. A time when many Danish designers used wood turning lathes to do their work - using noble tree species to create salad bowls, dishes and beautiful pots.



Bell

Material: Zamac
Protrusion: 32mm
Diameter: 42mm

Finish

- Antique Brown
- Antique Grey
- Inox Look
- Matt Black

Code

BEL42ABR
BEL42AGR
BEL42SS
BEL42MBL

Bell is inspired by a traditional door handle found in an old hotel in Dalarna, Sweden. The interplay of concave and convex surfaces adds visual interest while remaining graceful to the touch.



Circle

Protrusion: 24mm
Diameter: 50mm

Finish	Material	Code
● Antique Brown	Zamac	CIR50ABR
● Dark Brushed Gold	Zamac	CIR50GLD
● Inox Look	Zamac	CIR50SS
● Black Oak	Wood FSC 100%	CIR50BLO
● Dark Brown Oak	Wood FSC 100%	CIR50DBO
● Oak Clear Lacquered	Wood FSC 100%	CIR50OAK

Circle is a simple design with a clean circular front and soft rounded back. The handle shows its beauty when repeated.



Plato

Material: Aluminium
Protrusion: 24mm
Diameter: 42mm

Finish	Material	Code
● Brushed Brass	Aluminium	PLA42BB
● Brushed Matt Black	Aluminium	PLA42MB
○ Inox Look	Aluminium	PLA42SS
○ Matt White	Aluminium	PLA42MW
○ Beige	OceanIX	PLA42BG
● Dyed Black	OceanIX	PLA42DB
○ Grey	OceanIX	PLA42GR

Plato's tight shape and clear colours are the essence of Danish design, communicated wordlessly by the conical neck and rear and the small radius.



Simon

Material: Steel
Protrusion: 29mm
Diameter: 35mm

Finish
● Antique Brass
● Black Powder Coated
○ Inox Look

Code
SIM35ANB
SIM35BPC
SIM35SS





Timber

Beret	90
Circle	90
Crossing	91
Elan	92
Glove	93
Horizon	94
Join	95
Manta	96
Pulley	97



The Furnipart timber collection consists of a wide variety of handles and knob styles. The range has been created in a way which best showcases the natural grain and touch of solid wood.

Sourced from sustainably managed forests, all wood used is FSC® certified and includes classic finishes such as Oak Lacquered, Walnut Lacquered and Black Ash.



Beret

Material: Wood FSC 100%
Protrusion: 21mm
Diameter: 45mm

Finish	Code
● Black Ash	BER45BAS
● Oak Clear Lacquered	BER45OAK

Furnipart found inspiration in the traditional French berets for this wooden knob. The convex dome-like shape, the undercut and the wood makes it a delight for the eye as well as the hand.



Circle

Material: Wood FSC 100%
Protrusion: 24mm
Diameter: 50mm

Finish	Code
● Black Oak	CIR50BLO
● Dark Brown Oak	CIR50DBO
● Oak Clear Lacquered	CIR50OAK

Circle by Furnipart is a simple design with a clean circular front and soft rounded back. The handle shows its beauty when repeated highlighting the character of the materials.



Crossing

Material: Wood FSC 100% & Zamac
Protrusion: 39mm
Height: 11mm

Finish	Length	Hole Centres	Code
● Black Ash/Matt Black	50mm	16mm	CRO50BAS
● Oak Clear Lacquered/Matt Black	50mm	16mm	CRO50OAK
● Black Ash/Matt Black	168mm	160mm	CRO160BAS
● Oak Clear Lacquered/Matt Black	168mm	160mm	CRO160OAK
● Black Ash/Matt Black	328mm	320mm	CRO320BAS
● Oak Clear Lacquered/Matt Black	328mm	320mm	CRO320OAK

This D-handle comes from the idea of combining two materials – wood and metal. The wood handle brings warmth while the metal feet bring precision, an exciting mix of materials.



Elan

Material: Wood FSC 100%
Protrusion: 20mm
Height: 22mm

Finish	Length	Hole Centres	Code
● Dark Brown Oak	50mm	32mm	ELA50DBO
● Oak Clear Lacquered	50mm	32mm	ELA50OAK
● Dark Brown Oak	200mm	160mm	ELA200DBO
● Oak Clear Lacquered	200mm	160mm	ELA200OAK
● Dark Brown Oak	600mm	544mm	ELA600DBO
● Oak Clear Lacquered	600mm	544mm	ELA600OAK
● Dark Brown Oak	1200mm	1088mm	ELA12DBO
● Oak Clear Lacquered	1200mm	1088mm	ELA12OAK



Glove

Material: Wood FSC 100%
Protrusion: 26mm
Height: 24mm

Finish	Length	Hole Centres	Code
● Black Ash	55mm	32mm	GLV32BAS
● Oak Clear Lacquered	55mm	32mm	GLV32OAK
● Black Ash	180mm	160mm	GLV160BAS
● Oak Clear Lacquered	180mm	160mm	GLV160OAK

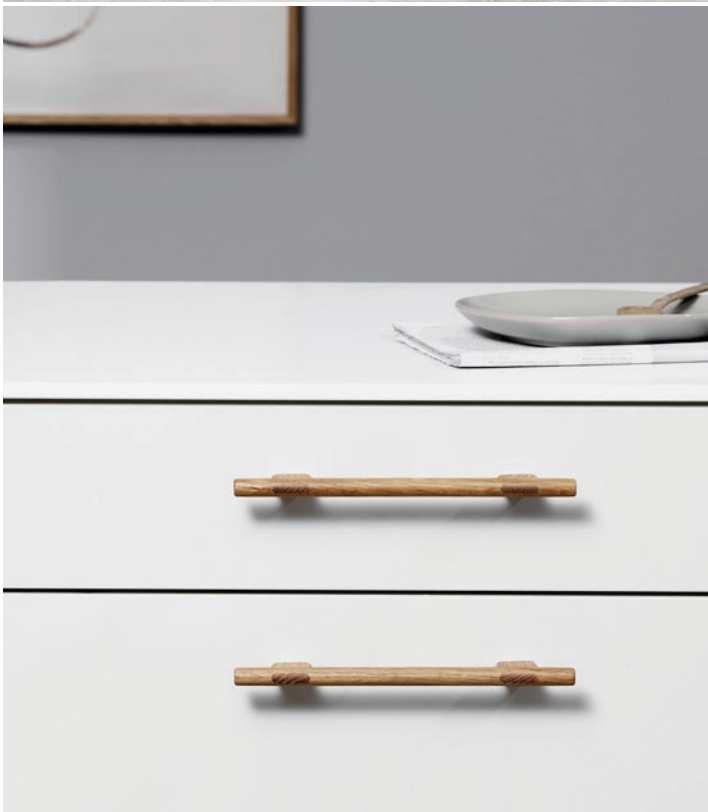
Glove unites material and shape in the best possible way, ensuring a perfect grip.



Horizon

Material: Wood FSC 100%

Finish	Length	Height	Hole Centres	Protrusion	Code
● Dark Brown Oak	80mm	41mm	32mm	27mm	HOR80DBO
● Oak Clear Lacquered	80mm	41mm	32mm	27mm	HOR80OAK
● Dark Brown Oak	140mm	70mm	64mm	28mm	HOR140DBO
● Oak Clear Lacquered	140mm	70mm	64mm	28mm	HOR140OAK



Join

Material: Wood FSC 100%
Protrusion: 36mm

Finish	Length	Height	Hole Centres	Code
● Oak Clear Lacquered	80mm	13mm	16mm	JOI16OAK
● Oak Clear Lacquered	240mm	10mm	160mm	JOI160OAK
● Oak Clear Lacquered	400mm	13mm	320mm	JOI320OAK

A beautiful mortise and tenon joint is the main feature of the Join handle. Mortise and tenon construction is widespread across the woodwork industry due to its strength and aesthetic appeal.



Manta

Material: Wood FSC 100%
Protrusion: 26mm
Height: 24mm
Length: 240mm
Hole Centres: 160mm

Finish
● Walnut Lacquered
● Oak Clear Lacquered

Code
MTA160WAL
MTA160OAK

Manta is a grip handle inspired by the graceful beauty of giant ocean manta rays. It fits just as well in the kitchen as on various furniture throughout the home.



Pulley

Material: Wood FSC 100%
Protrusion: 23mm
Diameter: 45mm

Finish
● Black Ash
● Oak Clear Lacquered

Code
PLY45BAS
PLY45OAK

Taking inspiration from the Chinese diabolo toy, the Furnipart Pulley knob has a concave shape which makes it fun to grab. Available in either Oak Lacquered or Black Ash.

A tree is planted
everytime we print.



Melbourne

94 Bell Street
Preston VIC 3072

Sydney

Unit 4, 3 Basalt Road
Greystanes NSW 2145

Perth

19 Christable Way
Landsdale WA 6065

Brisbane

Building 4.1, Logrunner Place
Willawong QLD 4110

Adelaide

9/20 Cheltenham Parade
Woodville SA 5011

Tasmania

Ph: 1800 633 507

Contact us for more information on any of our products, or visit our website for instructional videos and manuals.

Wilson & Bradley Pty Ltd

Support

1800 633 507
sales@wilbrad.com.au

Online Store

wilbrad.com.au

 @wilsonandbradley

wilson
&bradley
The Perfect Fit

Scan the QR code to
view our interactive
brochures online.

