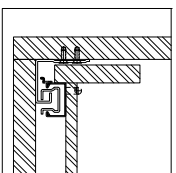


Series Full Extension Rebound Slides



- Load capacity:35kg
- Finish:zinc plated
- Lengths:270-550mm
- Full extension
- Tool free assembly and removal of drawer
- Silent system guarantees smooth run without noise
- Drawer height adjustment:0~+3mm



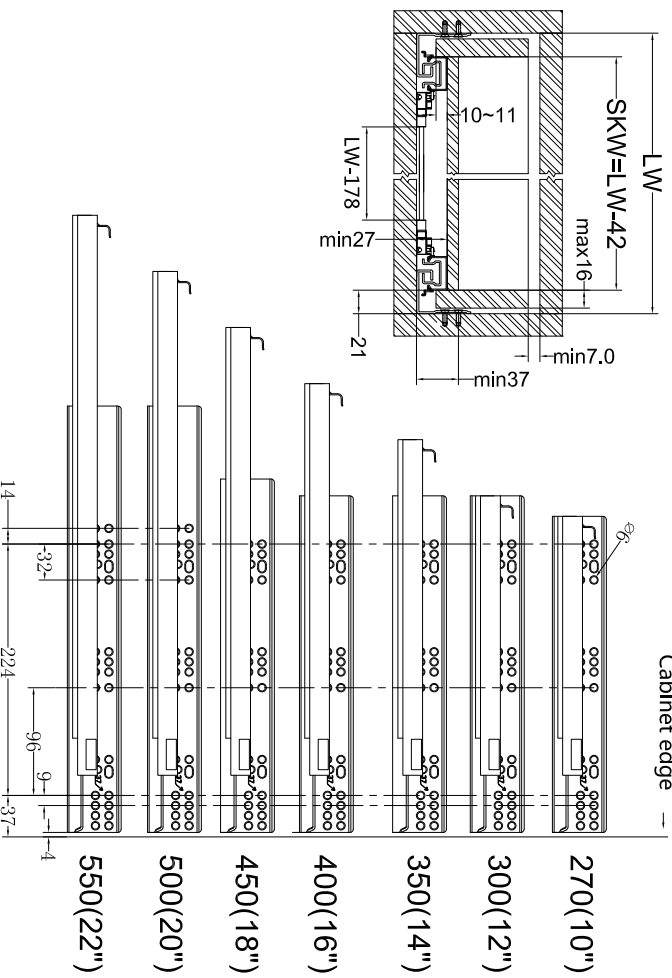
Installation Dimensions(mm)

SKW= Internal Drawer Width LW= Internal Cabinet Width

Max drawerside thickness:16mm

Bottom plate opening size=LW-42

Hole position (mm)



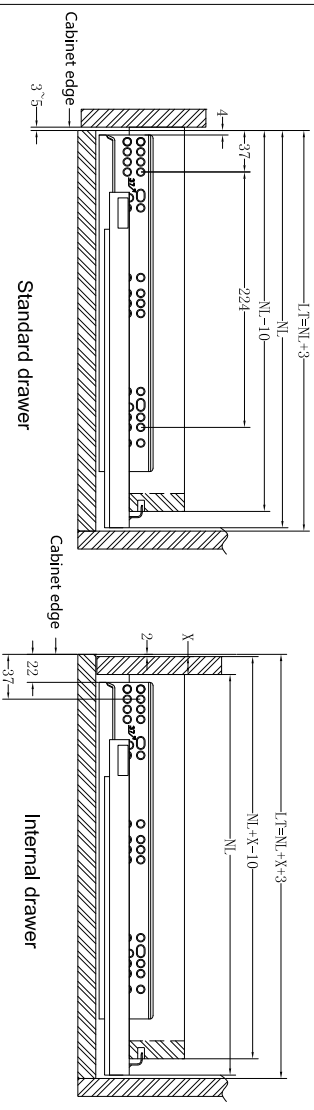
Installation Dimensions(mm)

NL= Nominal Slide Length

LT= Internal Cabinet Depth

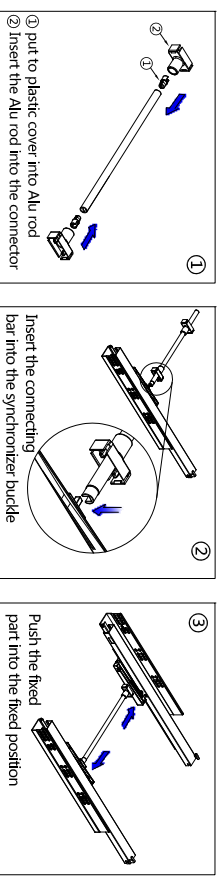
Internal drawer LT min=NL+X+3

Standard drawer LT min=NL+3

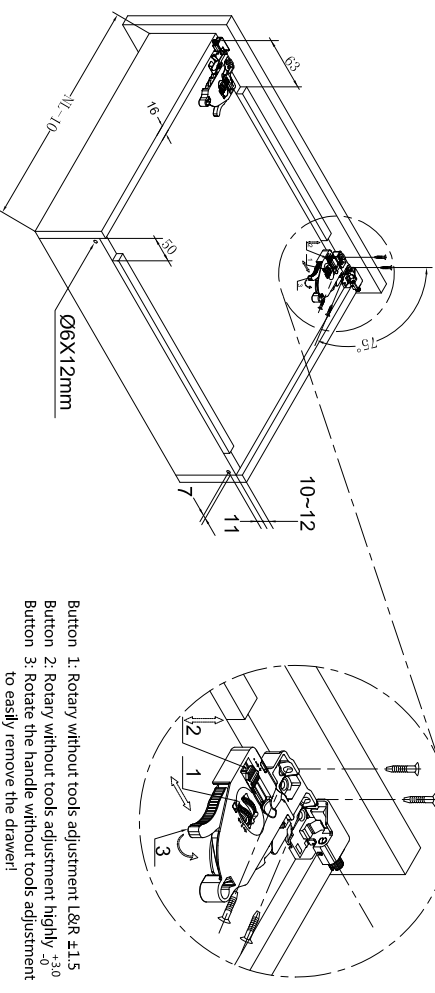


Installation of synchronous connecting bar(mm)

Cutting length of connecting rod=LW-178



Drawer size and boring(mm)



Button 1: Rotary without tools adjustment L&R ±1.5
 Button 2: Rotary without tools adjustment highly +30
 Button 3: Rotate the handle without tools adjustment to easily remove the drawer!

Length (Set/Cm)	270(10")	300(12")	350(14")	400(16")	450(18")	500(20")	550(22")
Length	10	10	10	10	10	10	10

Max drawerside thickness:16mm